

# ENGLISH LANGUAGE LEARNING

The ELL program was designed to support the goals of international middle school and high school students who want to gain an English proficiency level of B1 and progress into more advanced coursework such as the Dual Diploma or Early University programs.

- 1** 10 semester courses offered, aligned with Common European Framework of Reference for Languages (CEFR) levels of language proficiency
- 2** Placement test ensures students are enrolled in the course for their proficiency level
- 3** 18-week courses with a mix of synchronous and asynchronous components
- 4** Two 60-minute live group instruction facilitated by a certified, native English-speaking ELL teacher
- 5** Independent language practice using the ELL software program
- 6** Placement test upon completion to assess student progress and readiness for next level course or dual diploma courses

## STUDENTS IN THE ELL PROGRAM...



Have an opportunity to increase their English proficiency



Learn to read, speak, think and write in English



Have an increase in memory, mental flexibility and problem solving\*



Have an advantage over monolingual peers and have higher degrees of communication and literacy skills\*\*\*



Are exposed to and instructed by a native English-speaking teacher on a regular basis



Acquire the language skills needed for success in university and in the global workforce



Build confidence and are more academically successful in core subject areas such as math, science, reading and language arts\*\*

# ENGLISH LANGUAGE LEARNING STANDARD & CO-TEACHING

## Standard ELL Model

The Columbia School teacher provides all student support, including:

- Communication to students, grading and feedback, progress monitoring
- Two 60-minute live instructional sessions per week
- Partner provides an on-site facilitator to support student in classroom needs

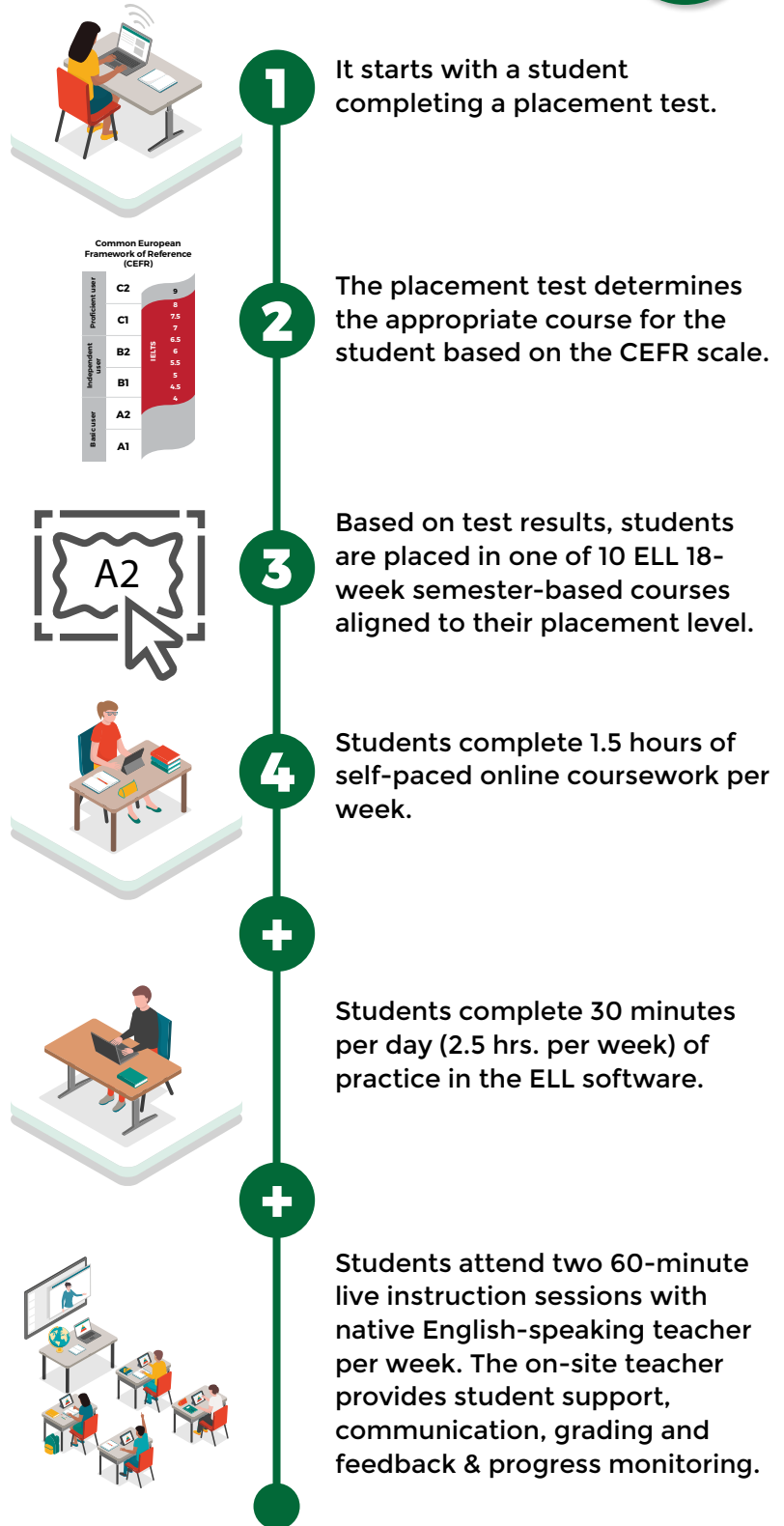
## Co-teaching Model

On-site partner teacher takes more of an active role in daily classroom management, including:

- Student daily coursework facilitation in ELL course
- Communication to students, grading and feedback, progress monitoring
- Attending live synchronous sessions and provide support to students as needed



## HOW IT WORKS



**Columbia School, letting students dream big!**

Visit Our Website or Call (772) 293-9356 (U.S.) to Learn More.

<https://columbiaschool.com/>



**COLUMBIA  
SCHOOL**